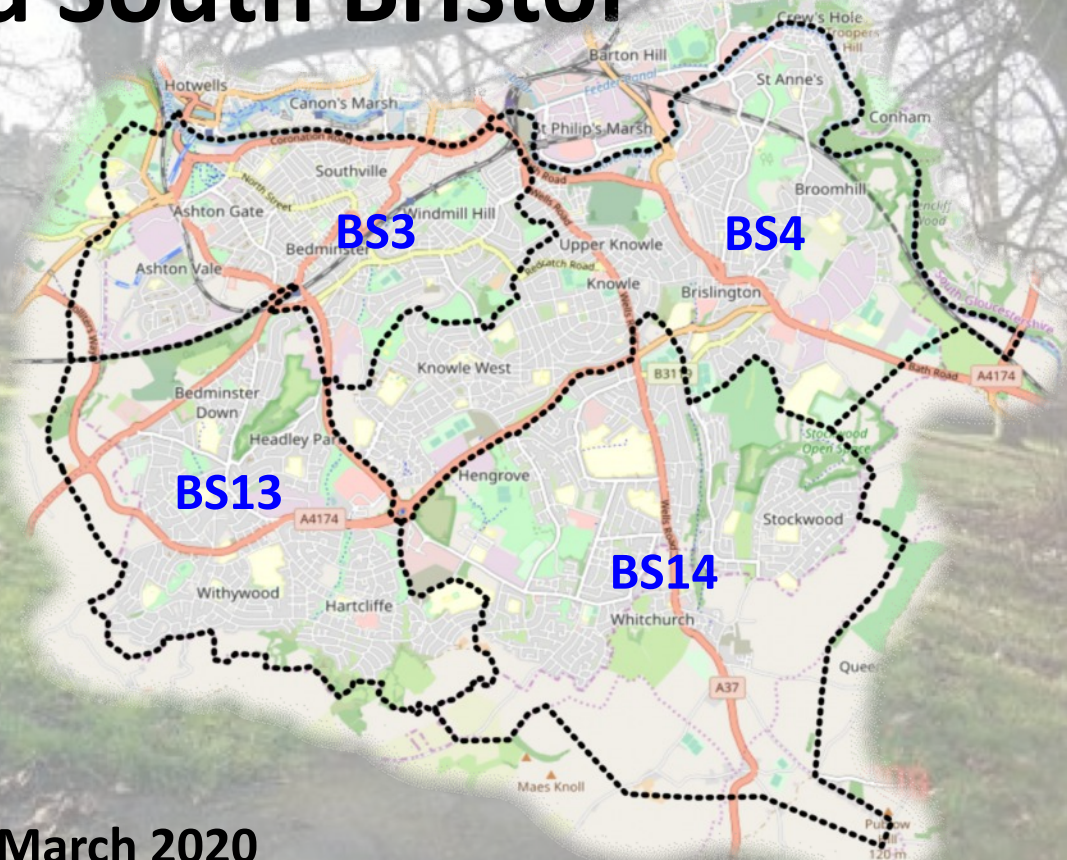


My Wild South Bristol



Second Report: March 2020

Background

My Wild City and *My Wild Bedminster* are projects led by the Avon Wildlife Trust and the BS3 Wildlife Group respectively. They share common aims, namely:

- to raise awareness of local wildlife amongst residents;
- to seek to improve their areas so that they become more attractive to a wide range of wild creatures and plants.

In October 2019, the BS3 Wildlife Group circulated an audit of public spaces such as parks, allotments, sports clubs, local nature reserves and Windmill Hill City Farm in the Greater Bedminster area. Support groups were asked for information about wildlife in particular spaces and to indicate if habitat improvements had recently been undertaken or were contemplated for the near future. Many groups responded with lots of information whilst a few did not respond at all. Nevertheless, we now have a better idea about who is doing what across BS3. The 2019 report will be updated during 2020 and will be obtainable by sending an email to:

MyWildBedminster@virginmedia.com

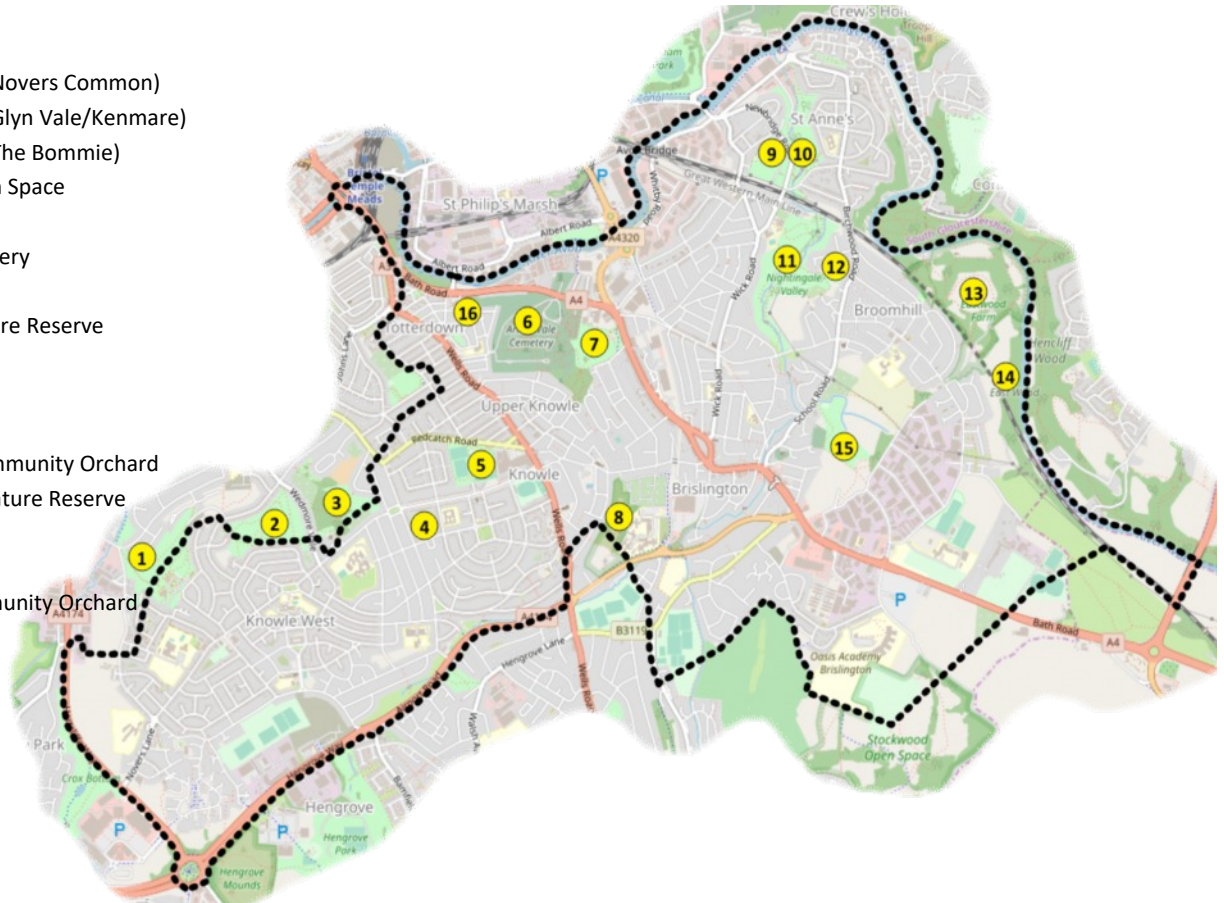
In January 2020 the BS3 Wildlife Group began contacting known park and other groups in the other South Bristol districts of BS4, BS13 and BS14 although we are sure that there are groups that we do not know about and that some spaces may have no support group at all. People were asked to complete a short questionnaire and this report is a summary of the comments received thus far.

We will continue to update this report during 2020 as we identify more green spaces and the groups that care for them. Although we are looking at fairly large spaces in this report, it is worth remembering that domestic gardens, street trees, community gardens and other small spaces are also very important in supporting wildlife. “Every window box counts!”

In addition to text we have also begun to produce maps showing the main green spaces within BS4, BS13 and BS14. As with the report itself, these have been made by individuals from outside the areas involved, but we would very much like to work with local people in order to improve them.

BS4 Green Spaces

- 1 Northern Slopes (Novers Common)
- 2 Northern Slopes (Glyn Vale/Kenmare)
- 3 Northern Slopes (The Bommie)
- 4 Salcombe Rd Open Space
- 5 Redcatch Park
- 6 Arno's Vale Cemetery
- 7 Arno's Court Park
- 8 Callington Rd Nature Reserve
- 9 St Anne's Park
- 10 St Anne's Wood
- 11 Nightingale Valley
- 12 Woodcroft Rd Community Orchard
- 13 Eastwood Farm Nature Reserve
- 14 Fox's Wood
- 15 Victory Park
- 16 Totterdown Community Orchard



Arno's Vale Cemetery (45 acres)

6

This space has been described as “one of the most important sites for people, history and wildlife” in Bristol. A restoration programme began in 2006 and there is a Landscape Management Plan (2018-2023) which aims to continue this process.

The cemetery has a range of habitats described in its management plan as woodland, unimproved grassland, semi-improved grassland and scrub - each with its own range of plants and animals.

Protected animals under the plan include bats, and of the 17 UK species around half a dozen can be seen with several breeding on site. Slow worms are described as “widespread across the site, in areas of grassland and scrub”. There is a wide range of birds and 23 species have been recorded as breeding within the cemetery, which also supports one social group of badgers.

Research at the site has yielded long lists of trees, grasses, ferns and flowers. Twenty-three species of butterfly have been claimed, many breeding on site.

The space is managed by the Arnos Vale Cemetery Trust.

<https://arnosvale.org.uk/>



Arno's Court Park

7

No information yet.

<https://www.parksandgardens.org/places/arnos-court>

Brislington Green Trail

Organisations in Brislington are collaborating on the development of a walking route linking many of their green spaces. This is at an early stage and a map is in development.

Eastwood Farm Nature Reserve

13

No information yet.

<http://www.eastwoodfarm.org.uk/>

Some otter surveys along the brook have been done in recent years, but there may have been other surveys too. The following wildlife improvement activities have taken place within the last three years.

- Regular litter picks
- Refurbished and repaired St Anne's Well
- Cleared and extended a pond in Nightingale Valley
- An annual *bramble bash* to reclaim meadow
- Himalayan Balsam pulls in spring/early summer
- Control of sycamore
- Installation of nesting boxes for owls
- Cleared fallen trees blocking footpaths
- Installed bypass steps around a fallen tree in St Anne's Wood
- Installed a "Rubbing Trail" consisting of metal plates with raised surfaces for people to take rubbings. This trail runs from the entrance to Nightingale Valley on Hill Lawn all the way to where Brislington Brook meets the Avon in St Anne's
- Organised bat walks and owl prowls

Proposals for the future include:

- Organising more bat walks and owl prowls
- Provide signposts throughout the valley using funding that has just been secured
- Provide more nesting boxes and wildlife habitats if we can secure funding

The support group is *Friends of Brislington Brook*, but see also

<http://www.facebook.com/FriendsBrislingtonbrook/>

<http://friendsofbrislingtonbrook.wordpress.com>



The Northern Slopes nature reserve and Wedmore Vale allotment green spaces straddle the BS3/BS4 border and parts of it are designated as a local nature reserve. Local members monitor wildlife, often as part of national surveys such as those coordinated by Butterfly Conservation, RSPB etc.

We wish to enhance the wildlife of the Slopes and have recently agreed a development plan up to 2030. This includes wildlife related elements such as:

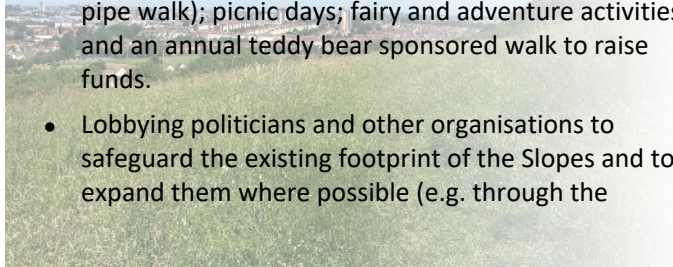
- Exploring how to work with others to extend activities to cover social, health, learning and site-based activities. Examples include visiting schools; arranging tours for schools and groups; arranging specialist - including wildlife - walks; extending *Green Gym* and *My Wild Child* to other parts of the Slopes; organising dark sky events (including the pipe walk); picnic days; fairy and adventure activities and an annual teddy bear sponsored walk to raise funds.
- Lobbying politicians and other organisations to safeguard the existing footprint of the Slopes and to expand them where possible (e.g. through the

planning system) and achieving more protection such as dark sky status.

- Encouraging local residents to undertake wildlife surveys and monitoring through existing initiatives such as *BS3 Wildlife*, *Bioblitz*, *RSPB* and butterfly conservation surveys.
- Protecting and enhancing the wildlife interests of the site such as: wildflowers for pollinators; hibernacula for reptiles, together with ongoing management activities.
- Attending training to help us do more for wildlife.

Next to the Slopes are the Springfield allotments which are linked to Knowle West Health Association and it is hoped that allotment holders will start monitoring their wildlife visitors with a winter bird survey.

email: enquiries@northern-slopes-initiative.co.uk
allotment@knowlewesthealthassoc.org.uk



Redcatch Park (12 acres)

5

A butterfly survey was carried out a few years ago but the details of this are not available. In the last three years we have planted a number of willows which are said to be a good habitat for moths. We have also introduced a bee-friendly planter which is consolidated by some wildflower planting that the city council has conducted over the past two years.

The support group is *The Friends of Redcatch Park*.

<https://www.facebook.com/groups/111666062184506/>

<http://www.friendsofredcatchpark/>

St Anne's Park

9

No information yet.

<https://www.facebook.com/groups/1529129924052154/>



Totterdown Community Orchard

16

This community orchard is off Bath Road at the bottom of Park St. The orchard has one large apple tree, probably about 50 years old, whose variety could not be identified by the Brogdale apple identification service and possibly grew from a seed. Local residents and TRESA (*Totterdown Residents Environmental and Social Action*) started clearing and planting the rest of the area from about 2005 with apple, pear, quince, cherry and peach trees plus a number of smaller soft fruit bushes.

The area behind the orchard is covered in trees which have grown up since the Totterdown house clearances of around fifty years ago. This land is very steep and most of it, although not the orchard or community space, is actually registered to the houses in Upper St. with a small triangle of common land in the middle. Trees growing here include horse chestnut, ash, plum, whitebeam and elder. A sweet chestnut has been planted at the back of the orchard.

There are foxes living in the top area, tadpoles in the pond in spring and the orchard is visited by jays and various song birds. Badgers have occasionally been sighted.

Woodcroft Road Community Orchard

12

No information yet.

<https://www.facebook.com/WoodcroftCommunityOrchard/>

Victory Park

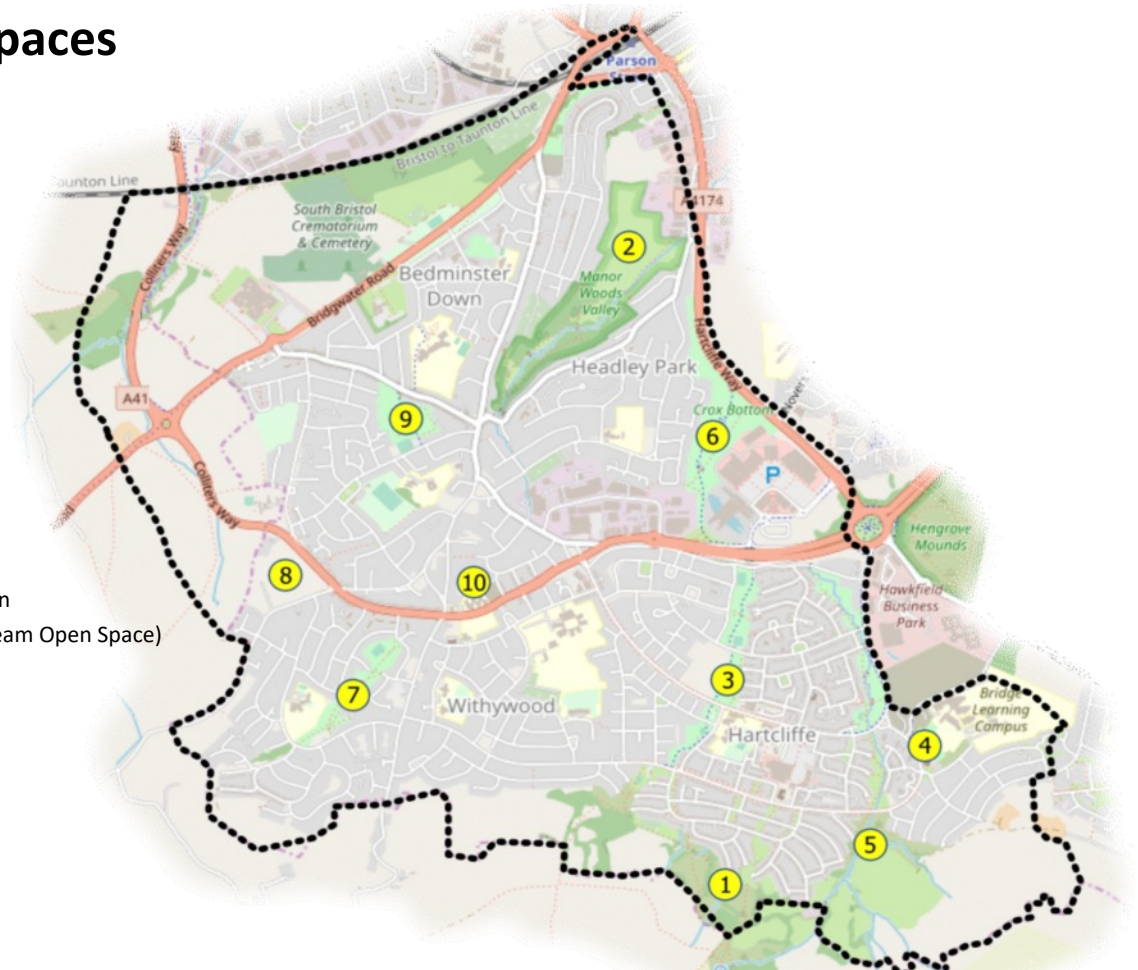
15

No information yet.



BS13 Green Spaces

- 1 Dundry Slopes
- 2 Manor Woods Valley
- 3 Wilmott Park
- 4 Hartcliffe Millennium Green
- 5 Maceys (Pigeon House Stream Open Space)
- 6 Crox Bottom
- 7 Withywood Park
- 8 Highridge Common
- 9 King's Head Lane Park
- 10 Goulston Rd Allotments



Dundry Slopes & Associated Spaces

1

The *Dundry and Hartcliffe Wildlife Conservation Group* (DHWC) started in February 2016 and took over from the Friends of Dundry Slopes, Valley Walk and the Maceys area. Primarily it is concerned with the Hartcliffe and Dundry areas where there are lots of parks and green spaces. Attempts have been made over the years to start individual groups for these, but with little interest shown the group decided to cover all of them and include smaller green spaces in streets as well.

The main spaces are Dundry Slopes, Valley Walk, the Maceys area and Crox Bottom. These are rich wildlife areas and part of a wildlife corridor running from Dundry along Pigeonhouse Stream and connecting with the Malago and then into the centre of Bristol. Secondary to these spaces are The Mounds and Hawkfield Meadows.

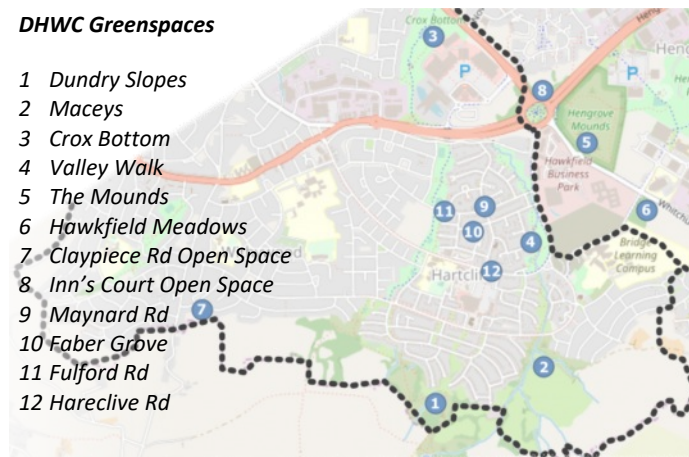
The street spaces are on Maynard Road, Faber Grove, Fulford Road, Hareclive Road and Bishport Avenue where spring bulbs and wildflower beds have been planted to brighten them up. These have been well received.

We would like to undertake surveys in our green spaces, for example of animals and plants. We are hoping that specialist organisations and groups who have the expertise to carry out surveys will work with us.

There are large gardens in Hartcliffe, some of which are good habitats for wildlife. We would like to promote a scheme for local people to make their gardens more wildlife-friendly with wildlife patches, bug hotels and to help hedgehogs by making small gaps in their fences and walls to connect gardens together.

DHWC Greenspaces

- 1 Dundry Slopes
- 2 Maceys
- 3 Crox Bottom
- 4 Valley Walk
- 5 The Mounds
- 6 Hawkfield Meadows
- 7 Claypiece Rd Open Space
- 8 Inn's Court Open Space
- 9 Maynard Rd
- 10 Faber Grove
- 11 Fulford Rd
- 12 Hareclive Rd



Goulston Rd Allotments

10

Goulston Road allotments are a fairly flat area which is currently very neglected with areas of rubbish. Local people are planning to clear it over the next few months and have the intention of encouraging wildlife (including the possibility of installing a pond) as well as offering food-growing opportunities for people.



Manor Woods Local Nature Reserve (53 acres) 2

Manor Woods is part of the Malago wildlife corridor which, as well as the local nature reserve, includes Manor Woods Orchard and the old quarries. It contains ancient and new post-war woodlands, large and small wildflower meadows, open parkland, an orchard and the middle stretch of the Malago itself.

The woodland contains a range of fungi, lichens, ground flora, shrubs and tree species with associated woodland fauna. The wildflower meadows contain a range of important and interesting plants such as three species of *orchid*, many *vetches*, *pale flax* and *corky-fruited water-dropwort*. The meadows abound with grasshoppers, butterflies and has a large population of slow-worms. The orchard contains mature apple and pear trees, all from seedlings and thus not true varieties, although the planting of named fruit varieties started in 2019.

The middle stretch of the Malago is home to a variety of aquatic invertebrates, including *beautiful demoiselles* and butterflies. There is a healthy population of *three-spined sticklebacks* which are good food for *kingfishers*, *grey herons* and *little egrets*; a number of teal overwinter on this stretch of water.

Flora and fauna are being actively and systematically surveyed whilst butterflies and slow-worms are regularly monitored. All species records are submitted to the Bristol Regional Environmental Records Centre (BRERC) and reports are published on our website.

Making this space even more wildlife-friendly is the *raison d'être* of the Manor Woods Valley Group. The group works to a management plan prepared by an ecologist who sits on the committee of the group and which has been agreed with Bristol City Council and Avon Wildlife Trust. Regular volunteer working parties carry out activities such as coppicing; scrub clearance; non-native plant species' surveys and eradication activities; meadow cutting and seeding; tree planting and path maintenance. With the possible exception of the amenity grassland, all areas shown on the plan are useful to wildlife. Apart from the amenity grassland, amenity trees and dense scrub, all areas are being actively managed for the benefit of wildlife but can be improved upon to a greater or lesser extent.

The Manor Woods Valley Group can be contacted via:

Email: manorwoodsvalley@gmail.com
Web: <https://manorwoodsvalley.org>
Facebook: Manor Woods Valley Group

Hartcliffe Millennium Green

4

No information yet.

Wilmott Park

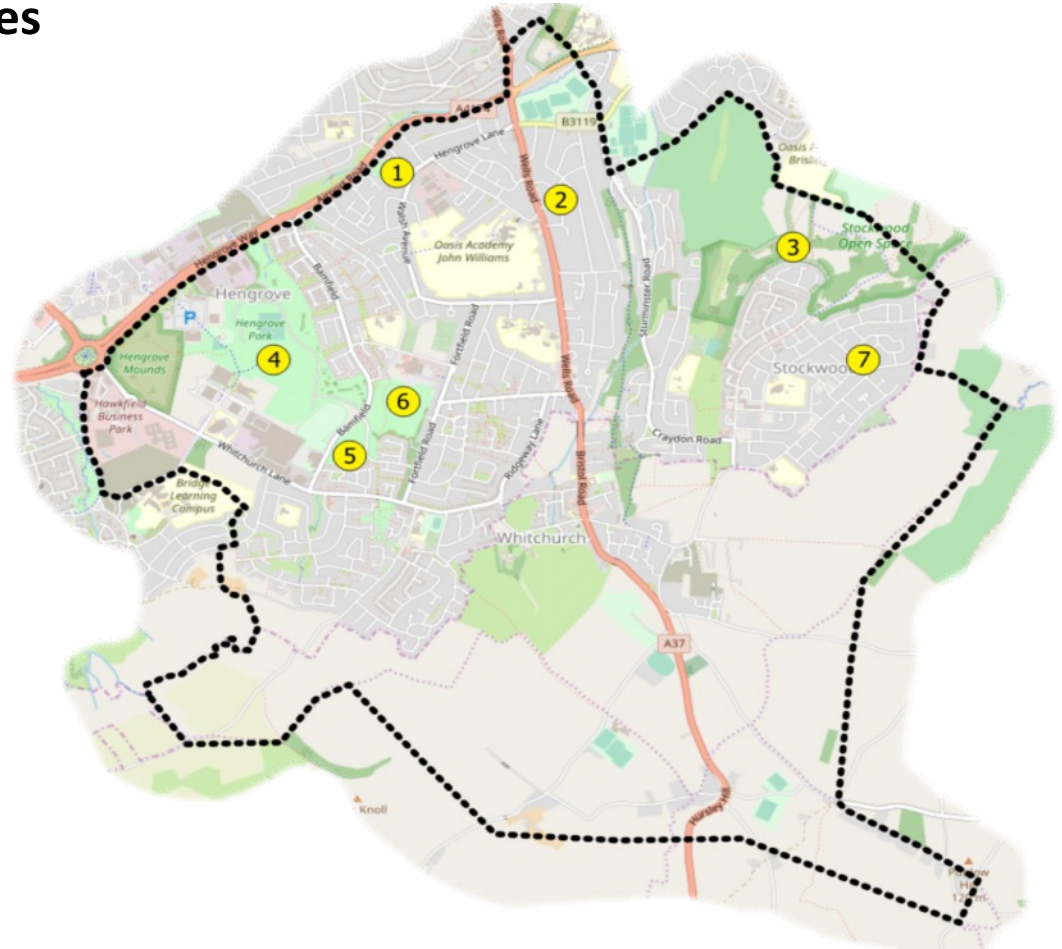
3

No information yet.



BS14 Green Spaces

- 1 Hengrove Farm Open Space
- 2 Mowbray Rd Open Space
- 3 Stockwood Open Space
- 4 Hengrove Park
- 5 Bamfield Green Space
- 6 Briery Leaze Rd Open Space
- 7 Cottle Road Park



BS14 Green Spaces

Groups in BS14 have yet to be contacted and so there is no information to report at present.

Thank you to everyone who has sent in information already, and also to those who will send even more in the coming months.

The BS3 Wildlife Group can be emailed via:

MyWildBedminster@virginmedia.com

The information supplied by local people has been put together to produce this report by Ben Barker and Glenn Taylor.

If you are in contact with individuals who are associated with green spaces for which we have no information, then we would be much obliged if you would bring this report to their attention as it is quite possible that the lack of information is due to our having out-of-date contact information.